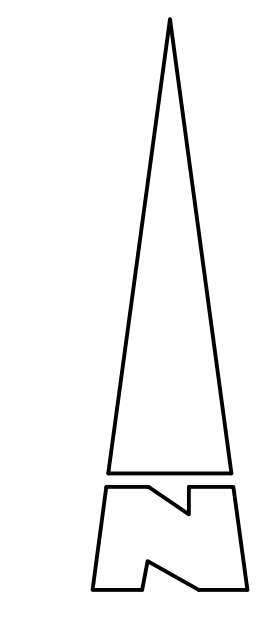
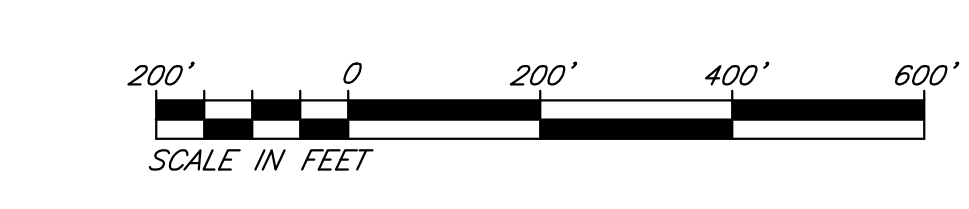


- UTILITY LEGEND:**
- PHASE BOUNDARY
 - SHEET LIMIT
 - ① SHEET NUMBER
 - PROPOSED WATER
 - PROPOSED SEWER
 - PROPOSED RECLAIMED WATER
 - PROPOSED STORM DRAIN
 - EXISTING WATER
 - EXISTING SEWER
 - EXISTING RECLAIMED WATER
 - EXISTING STORM DRAIN
 - 1200--- EXISTING CONTOUR ELEVATION
 - 1200--- PROPOSED SURFACE ELEVATION
 - 1378.3--- PROPOSED PAD ELEVATION
 - ELEV. = ELEVATION
 - FG = FINISH GRADE
 - FL = FLOWLINE
 - FS = FINISHED SURFACE
 - D.G. = DECOMPOSED GRANITE
 - L = LENGTH
 - W = WIDTH
 - MIN. = MINIMUM
 - PL = PROPERTY LINE
 - R/W = RIGHT OF WAY
 - GD = GRADE BREAK
 - TC = TOP OF CURB
 - 45 = LOT NUMBER
 - TOE OF SLOPE (2:1 UNLESS OTHERWISE NOTED)
 - TOP OF SLOPE
 - DAYLIGHT LINE

REAR YARD SLOPE NOTE:
55 LOTS IDENTIFIED WITH * WILL HAVE HOME OWNER MAINTAINED REAR YARDS THAT EXCEED 15 FEET HEIGHT (RANGING 15 FEET TO 29 FEET HIGH MAX)

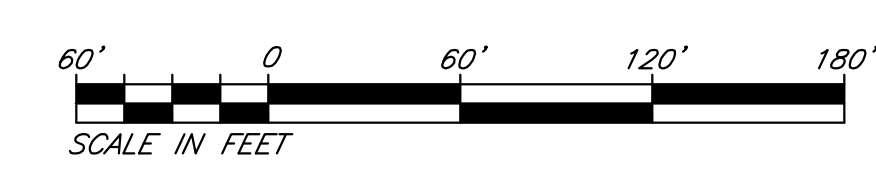
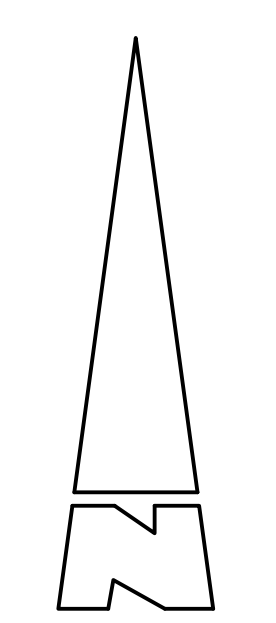
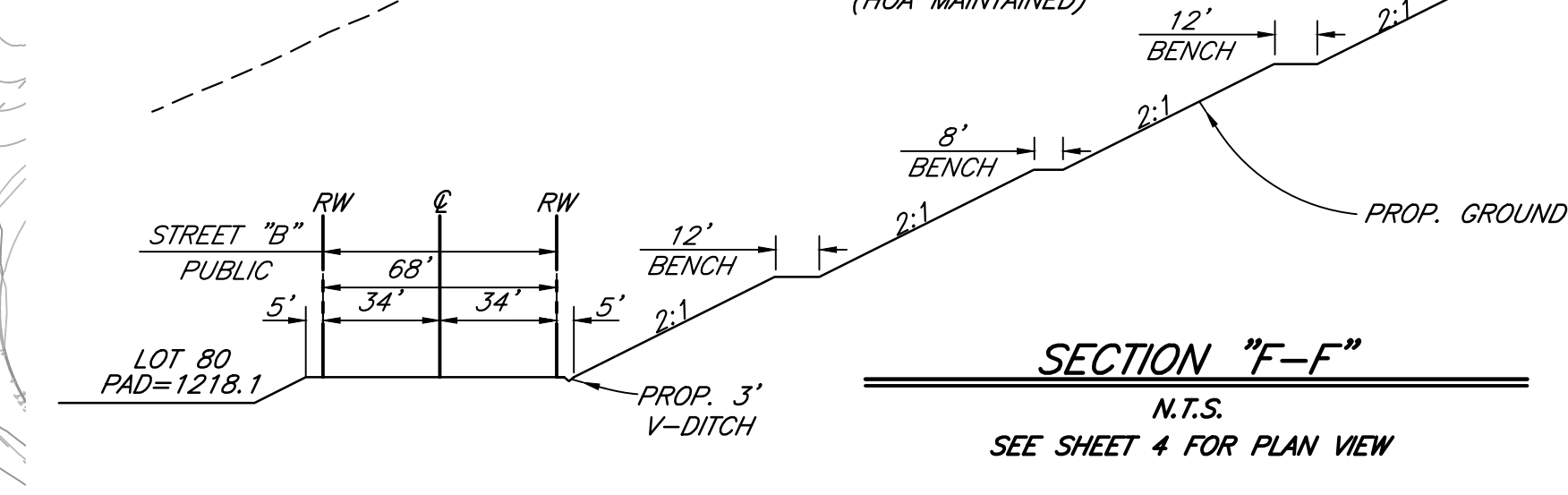
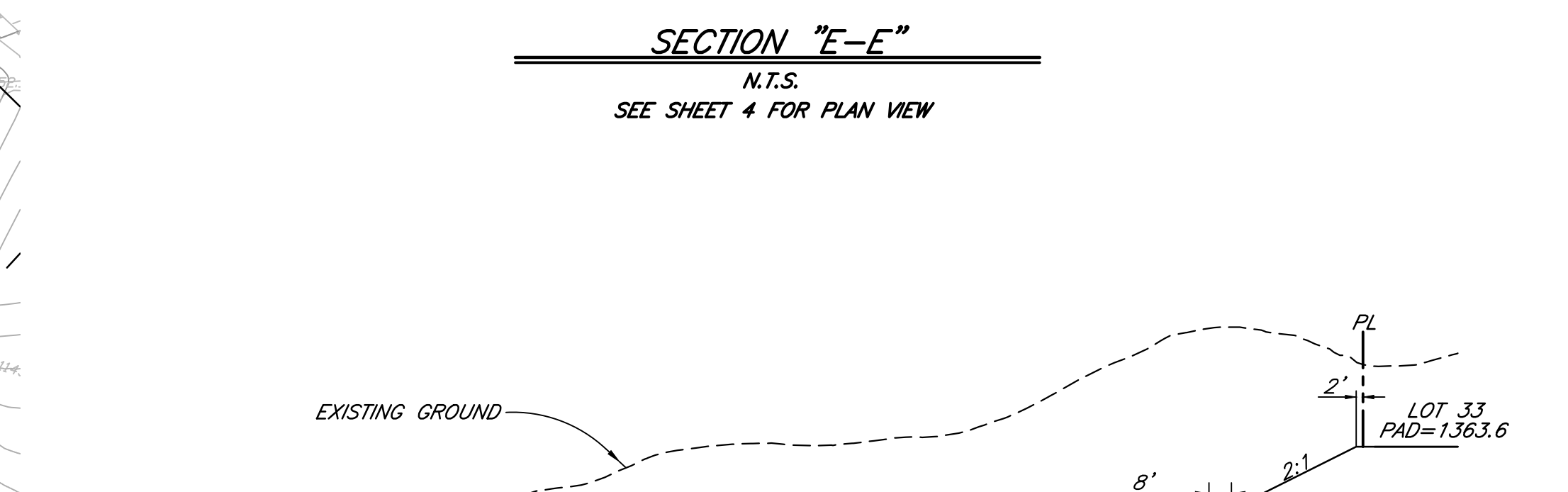
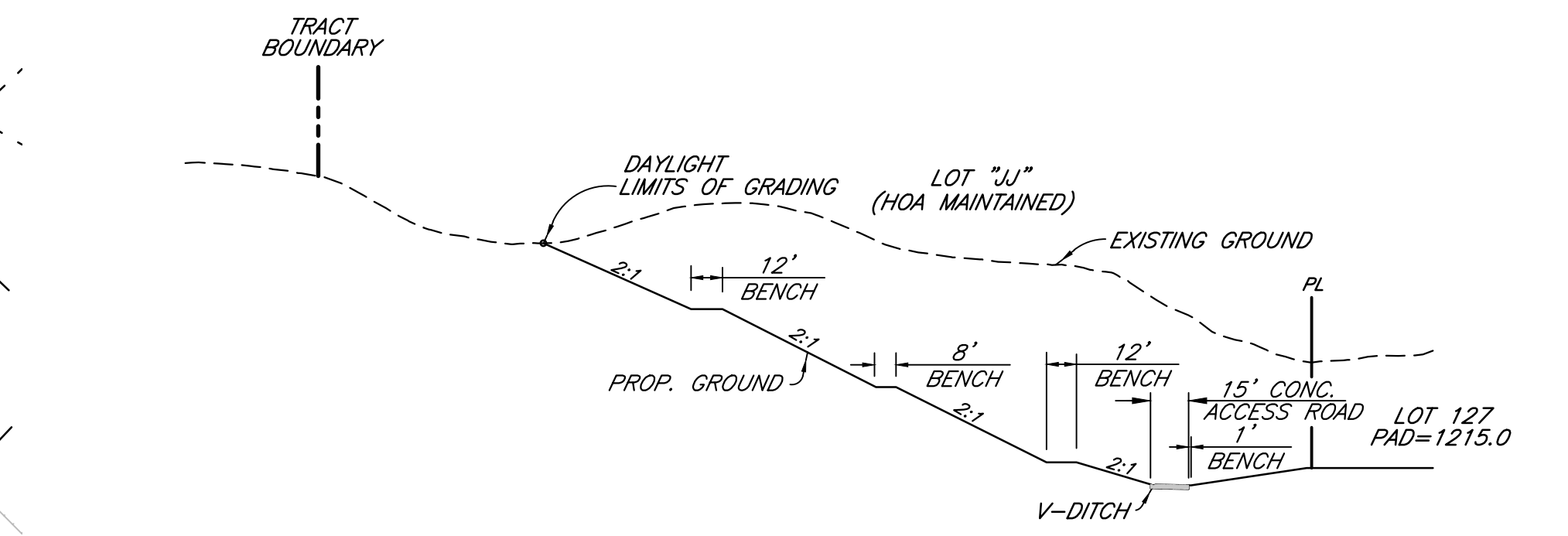
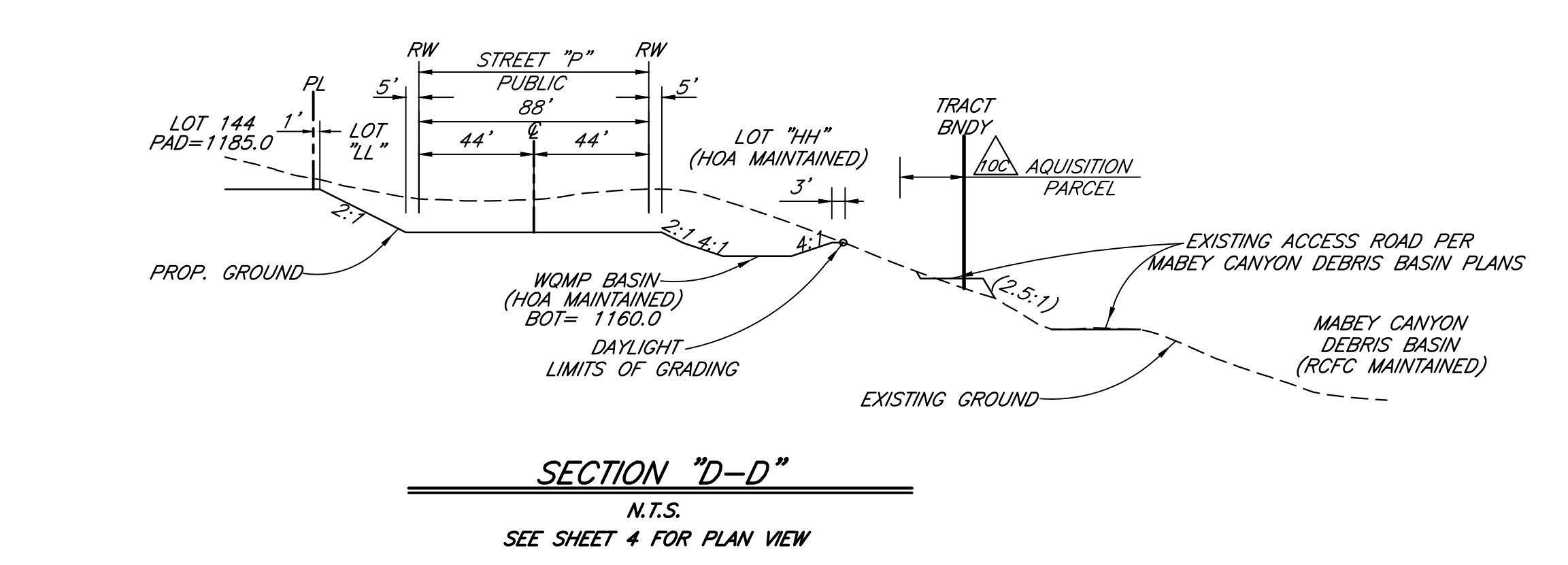
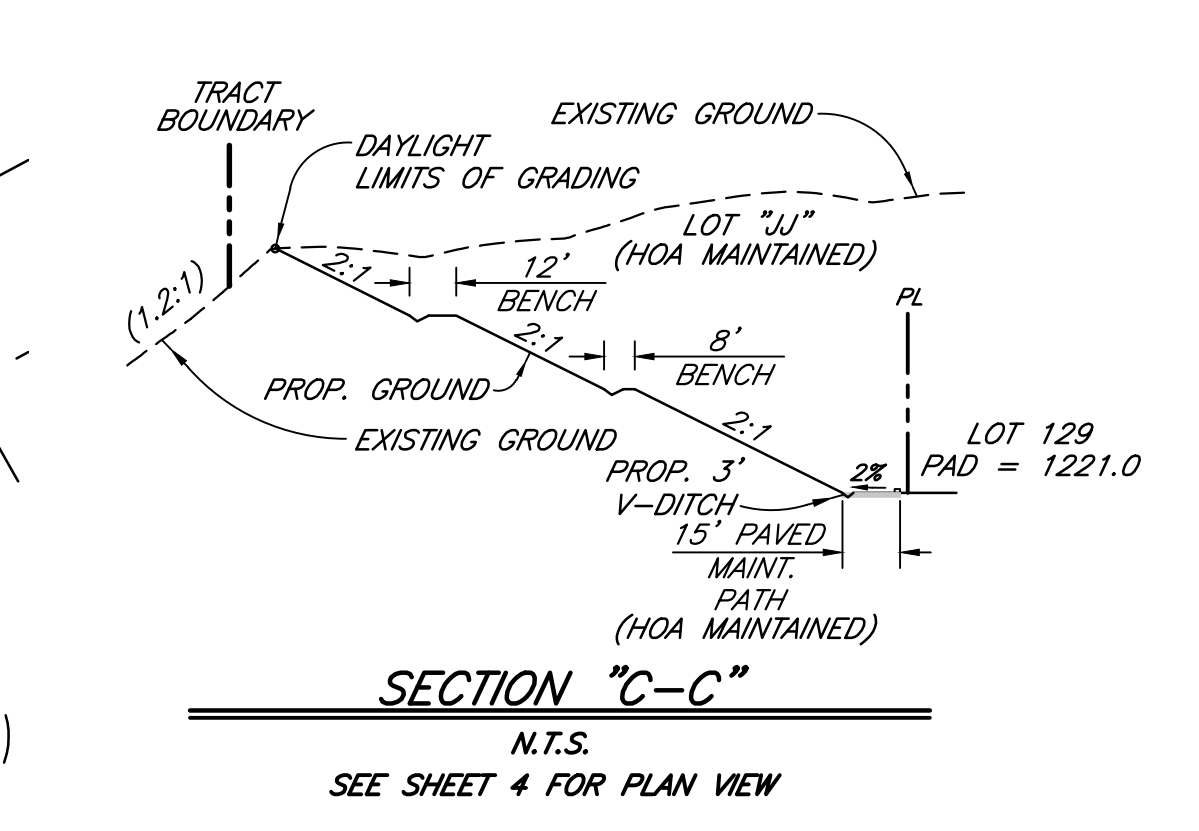
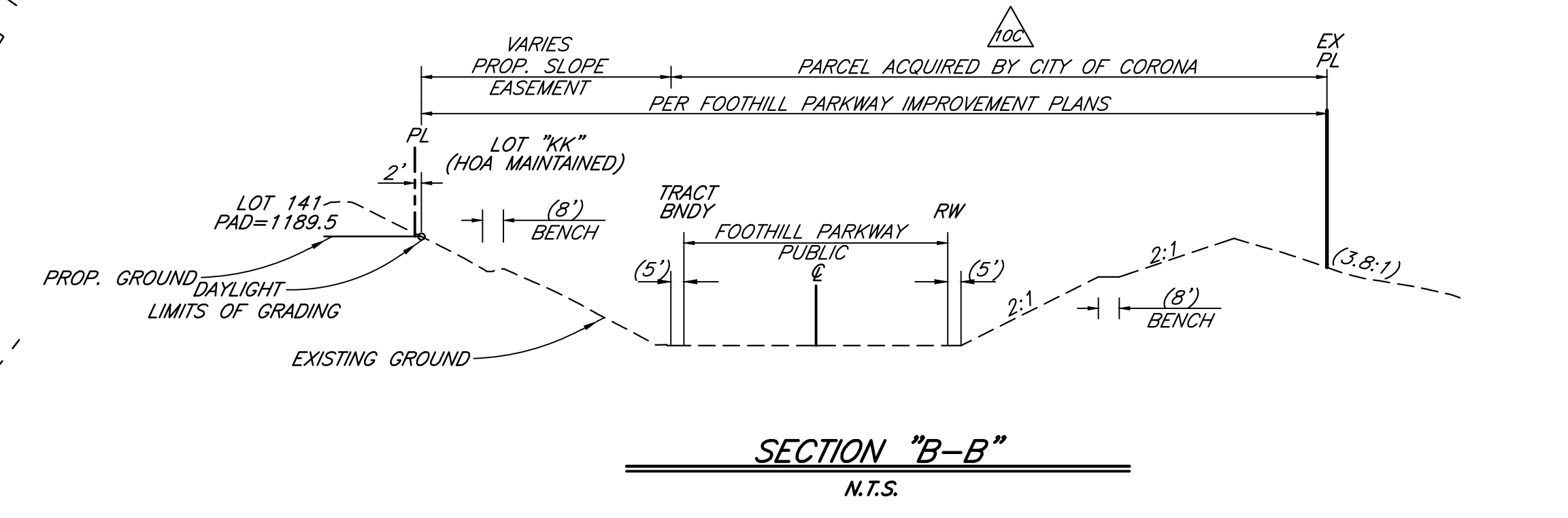
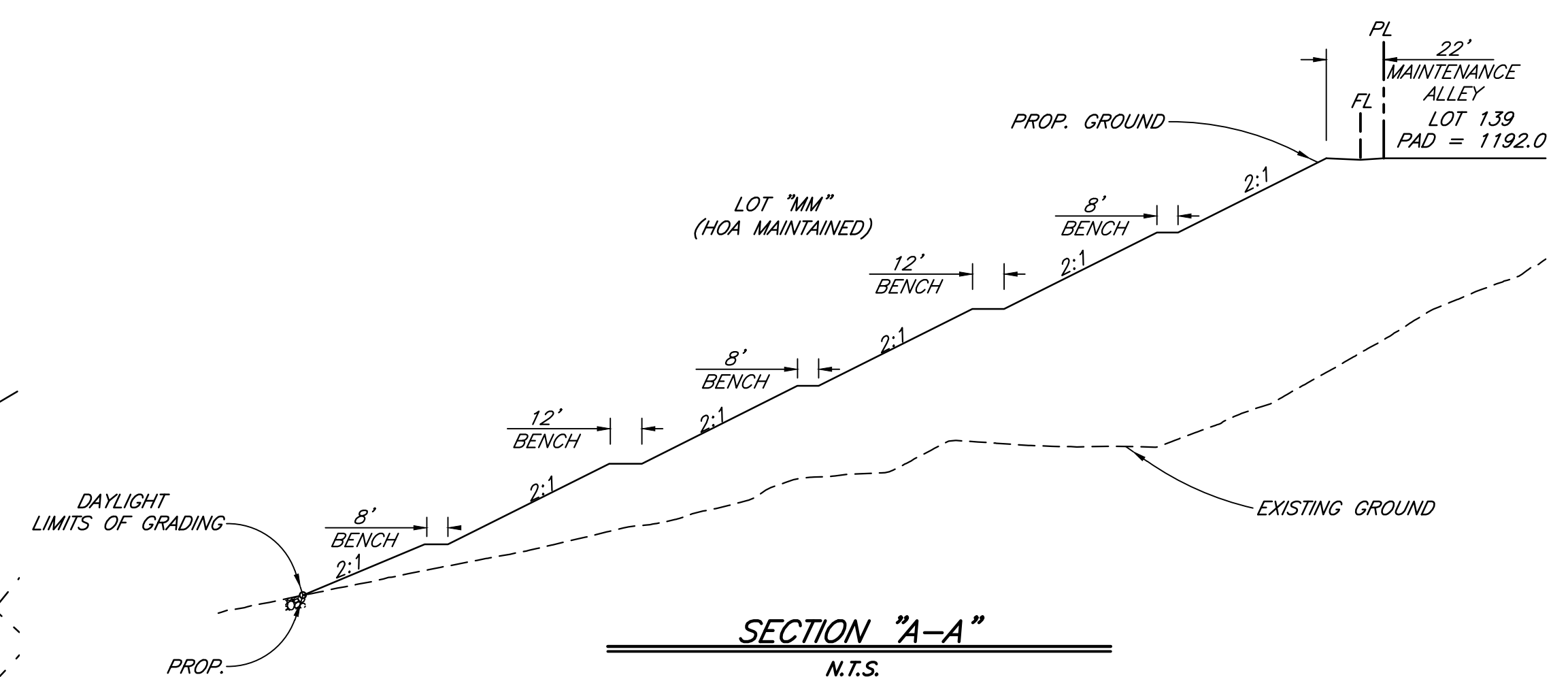
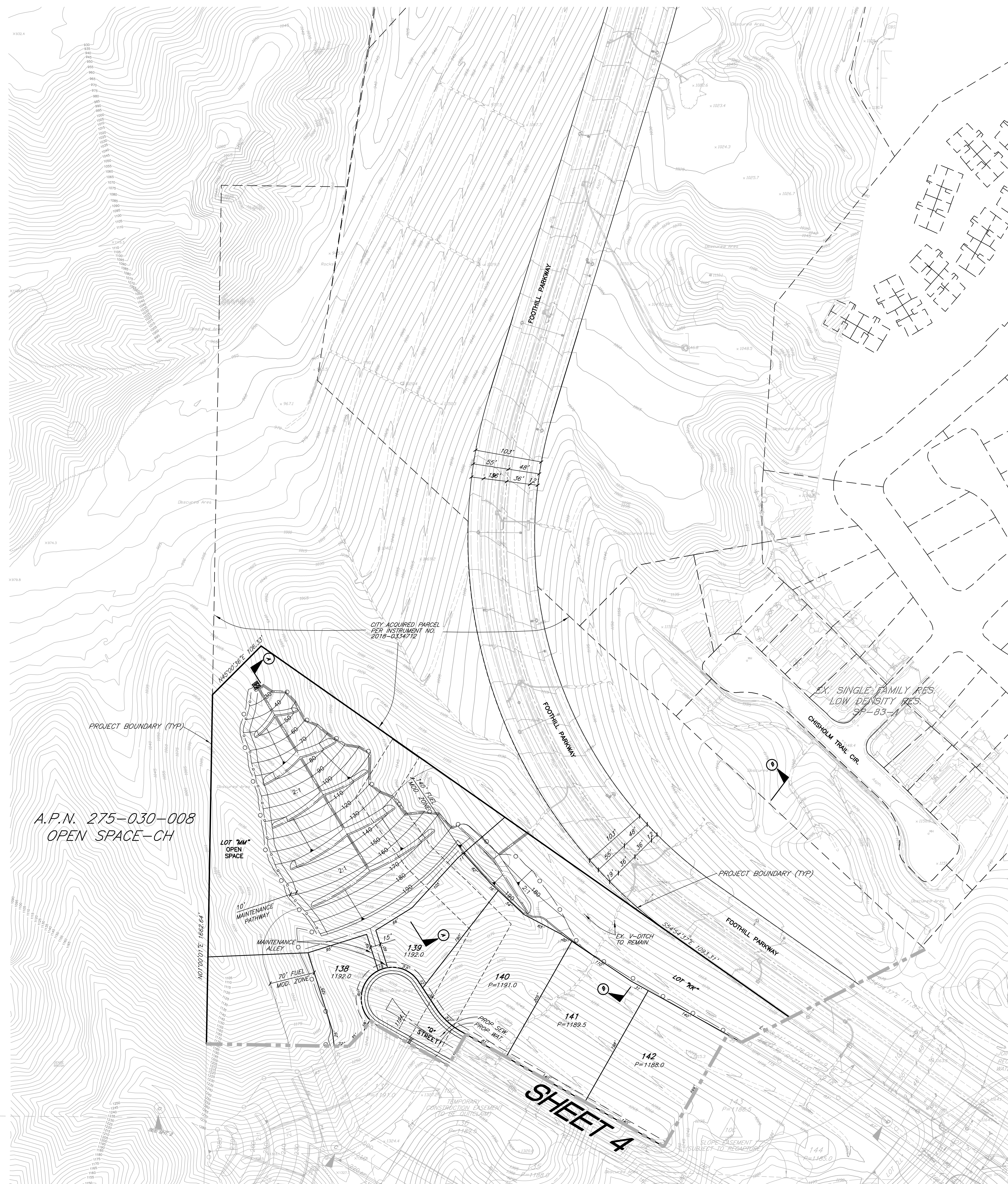


REVISED TENTATIVE TRACT MAP NO. 36544 SKYLINE HEIGHTS CITY OF CORONA

PREPARED FOR: **RICHLAND DEVELOPERS, INC.**
3161 MICHELSON DRIVE, SUITE 425
IRVINE, CA 92612
949-261-7010

PREPARED BY: **KWC ENGINEERS**
180 COMPTON AVENUE, SUITE 100, CORONA, CA 92626-2525 951-734-2130

SHEET 2 OF 12 SHEETS

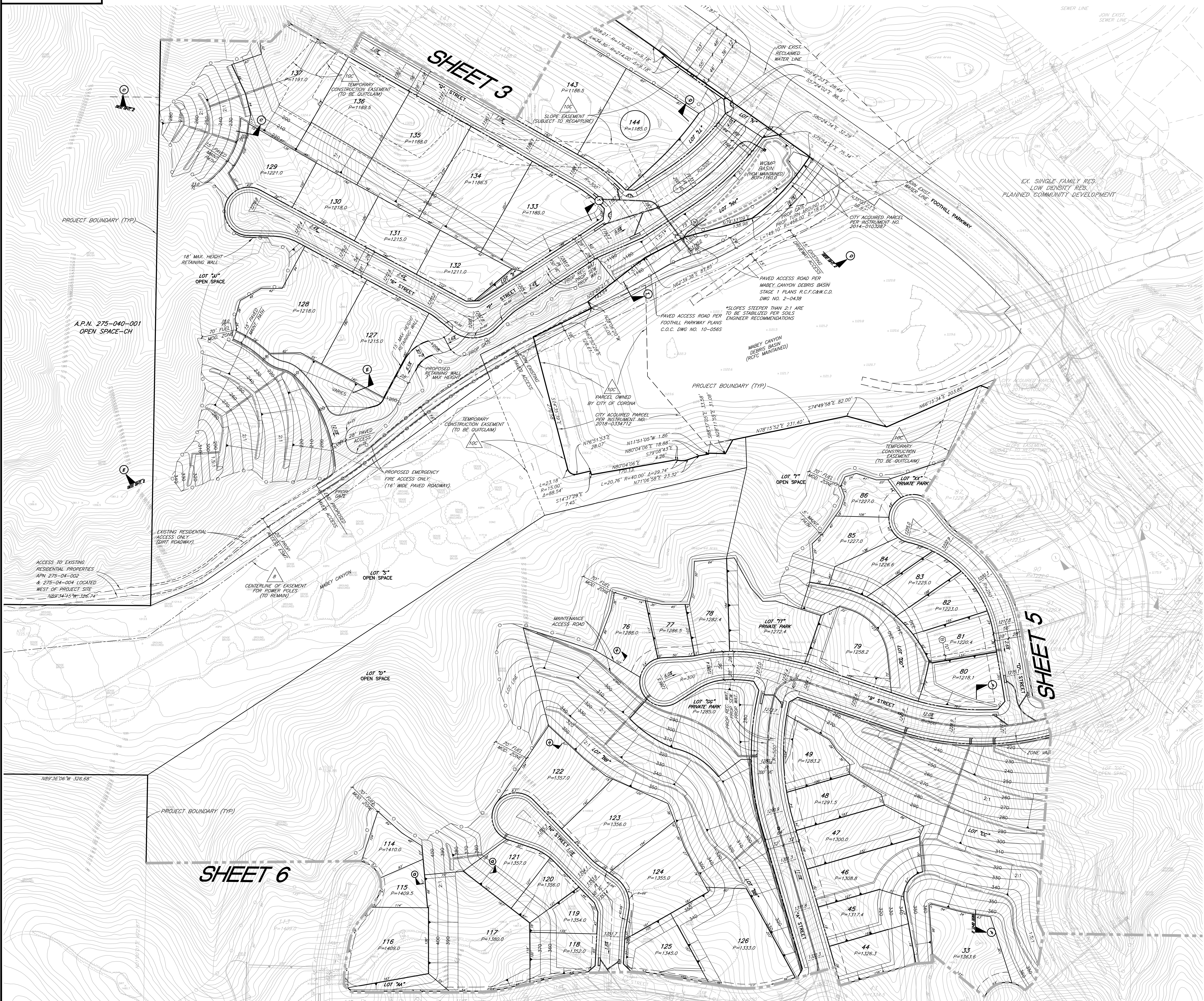


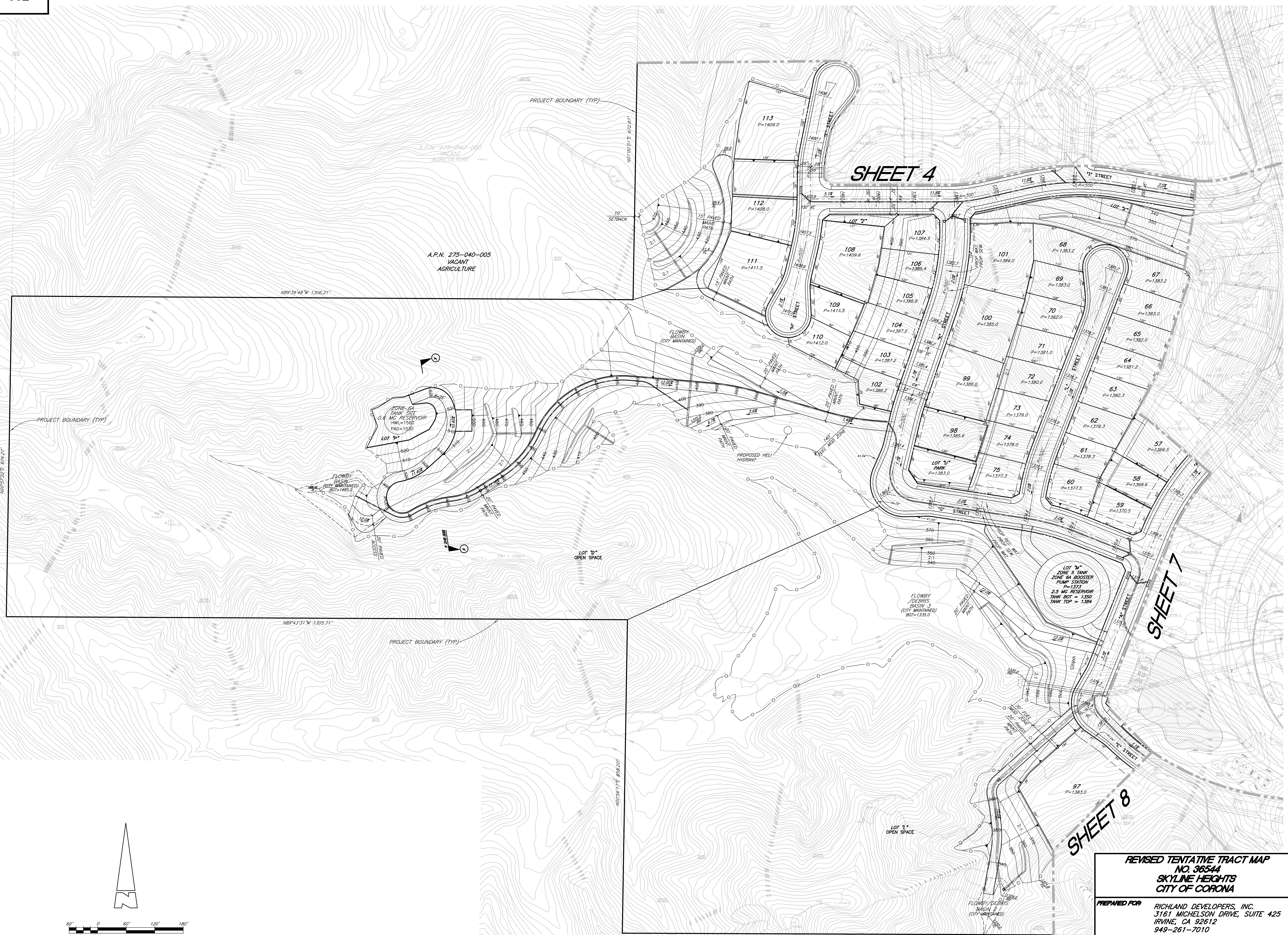
REVISED TENTATIVE TRACT MAP NO. 36544 SKYLINE HEIGHTS CITY OF CORONA

PREPARED FOR: **RICHLAND DEVELOPERS, INC.**
3161 MICHELSON DRIVE, SUITE 425
IRVINE, CA 92612
949-261-7010

PREPARED BY: **KWC ENGINEERS**
1800 COMPTON AVENUE, SUITE 100, CORONA, CA 92626-2392 951-734-2130

SHEET 3 OF 12 SHEETS

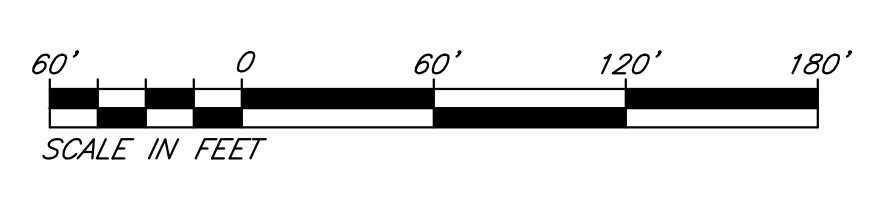
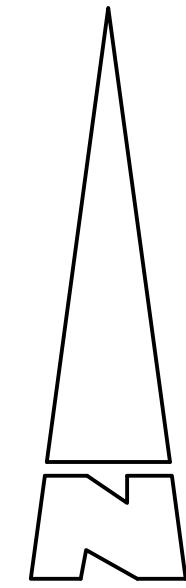




SHEET 4

SHEET 7

SHEET 8



REVISED TENTATIVE TRACT MAP
 NO. 36544
 SKYLINE HEIGHTS
 CITY OF CORONA

PREPARED FOR: RICHLAND DEVELOPERS, INC.
 3161 MICHELSON DRIVE, SUITE 425
 IRVINE, CA 92612
 949-261-7010

PREPARED BY: **KWC** ENGINEERS
 CIVIL ENGINEERS • PLANNERS • SURVEYORS
 1800 COMPTON AVENUE, SUITE 100, CORONA, CA 92626-2395 951-734-2130

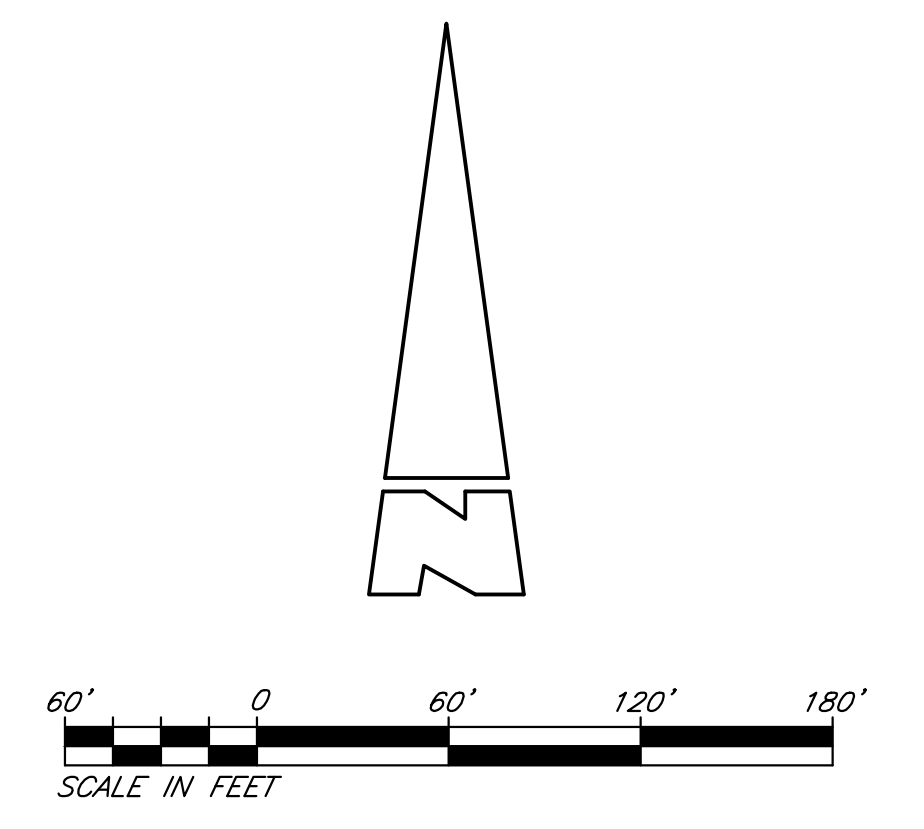
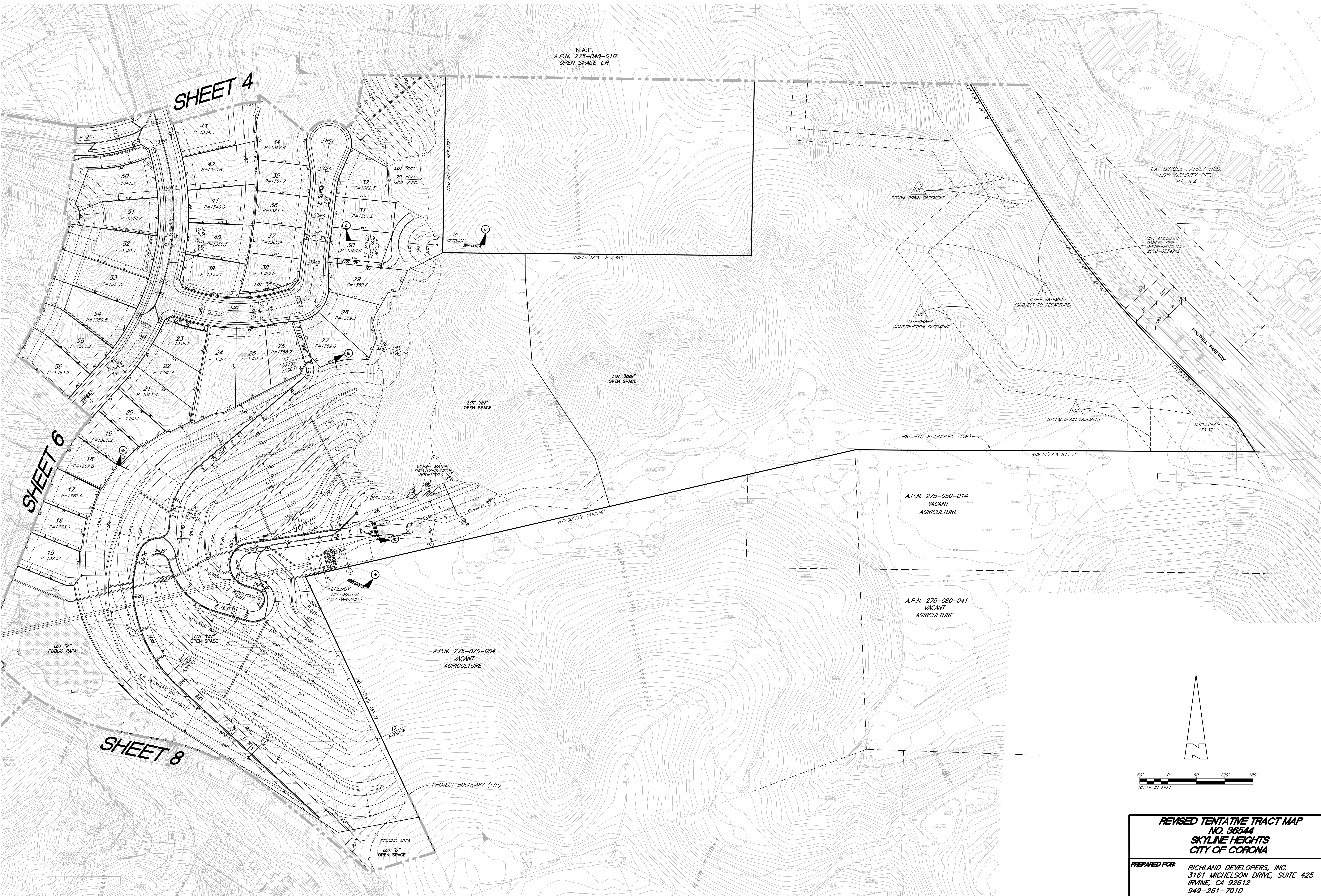
SHEET
 6 OF 12
 SHEETS

SHEET 4

SHEET 6

SHEET 8

N.A.P.
A.P.N. 275-040-010
OPEN SPACE-CH

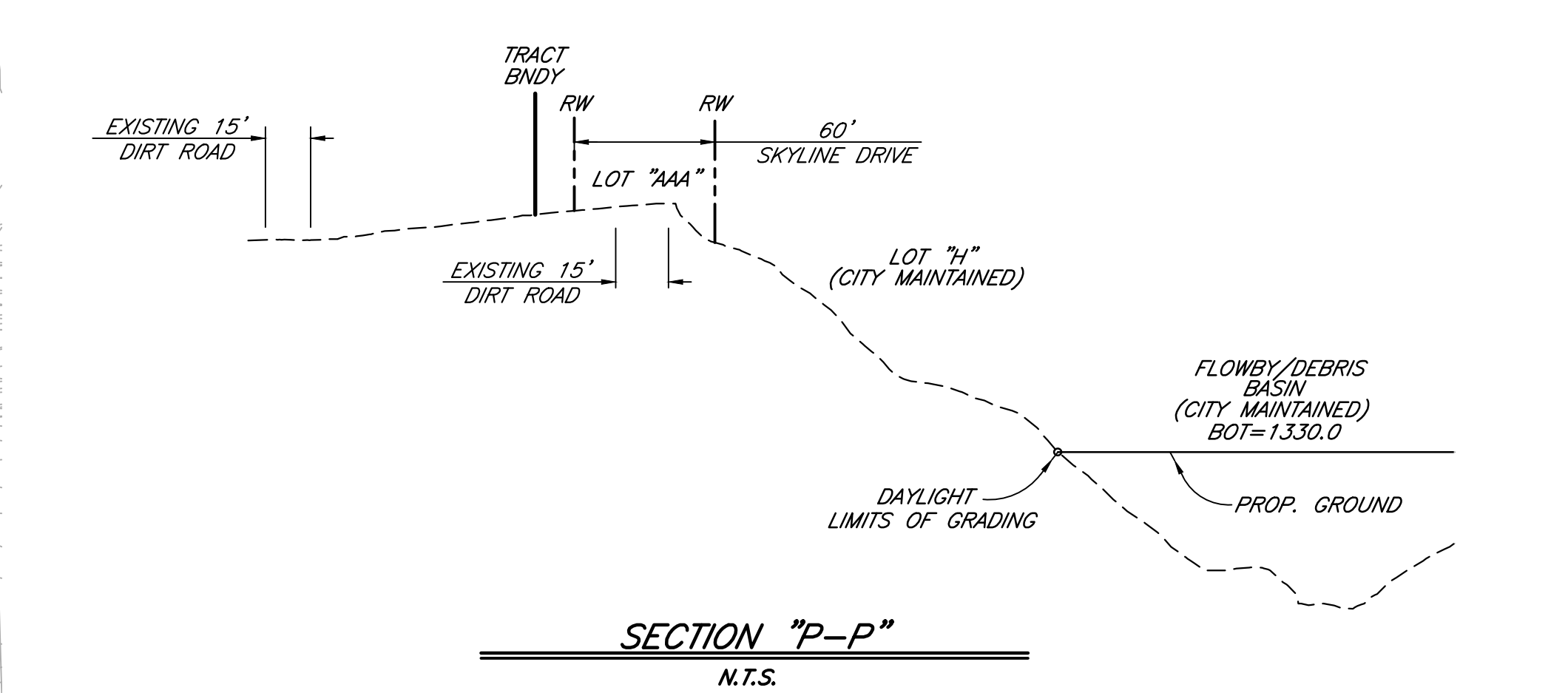
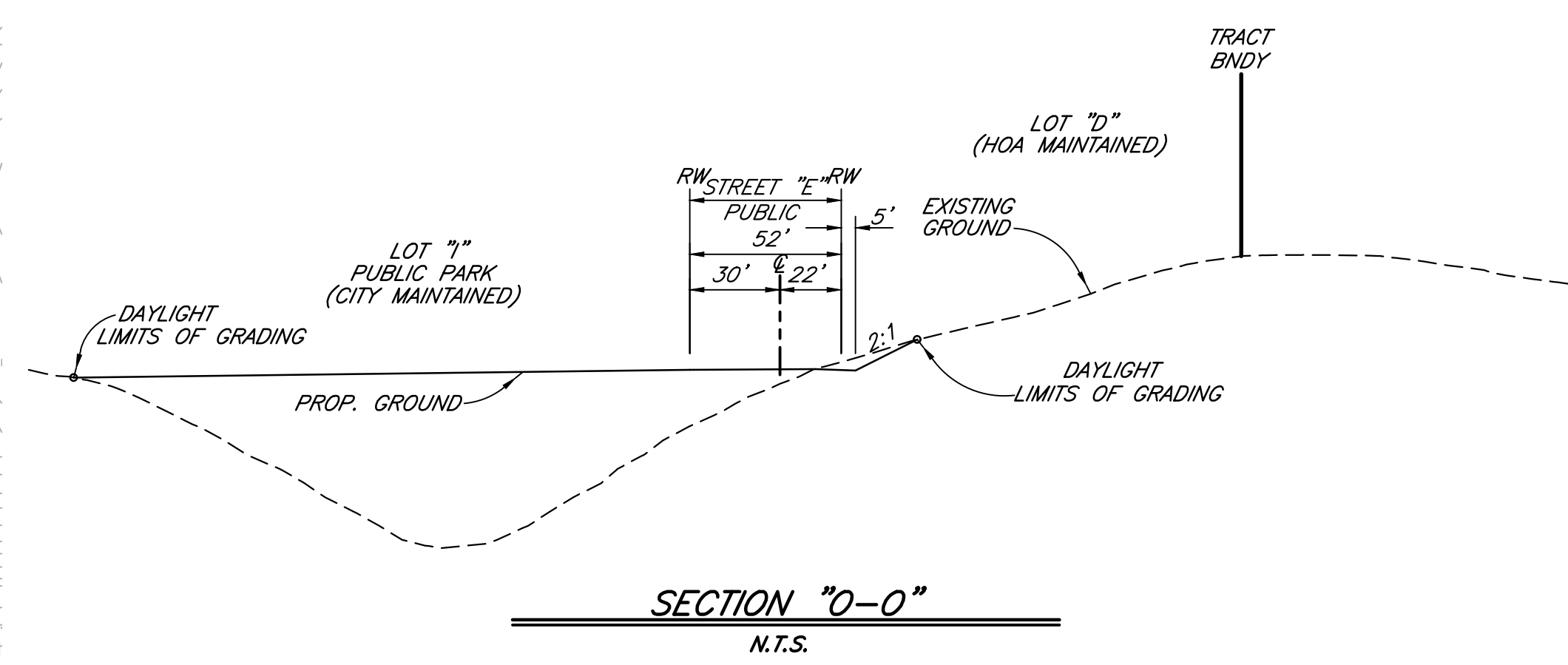
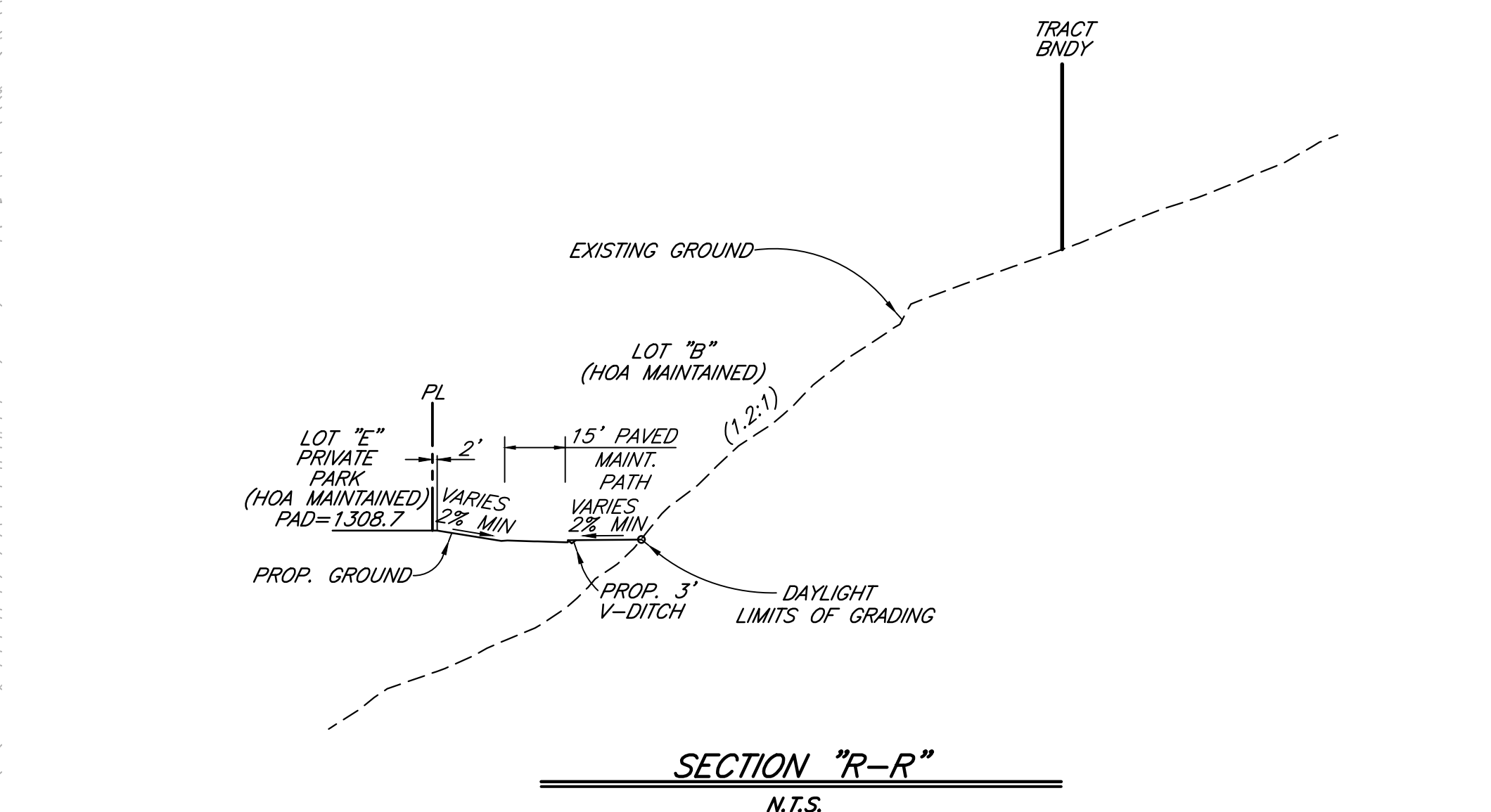
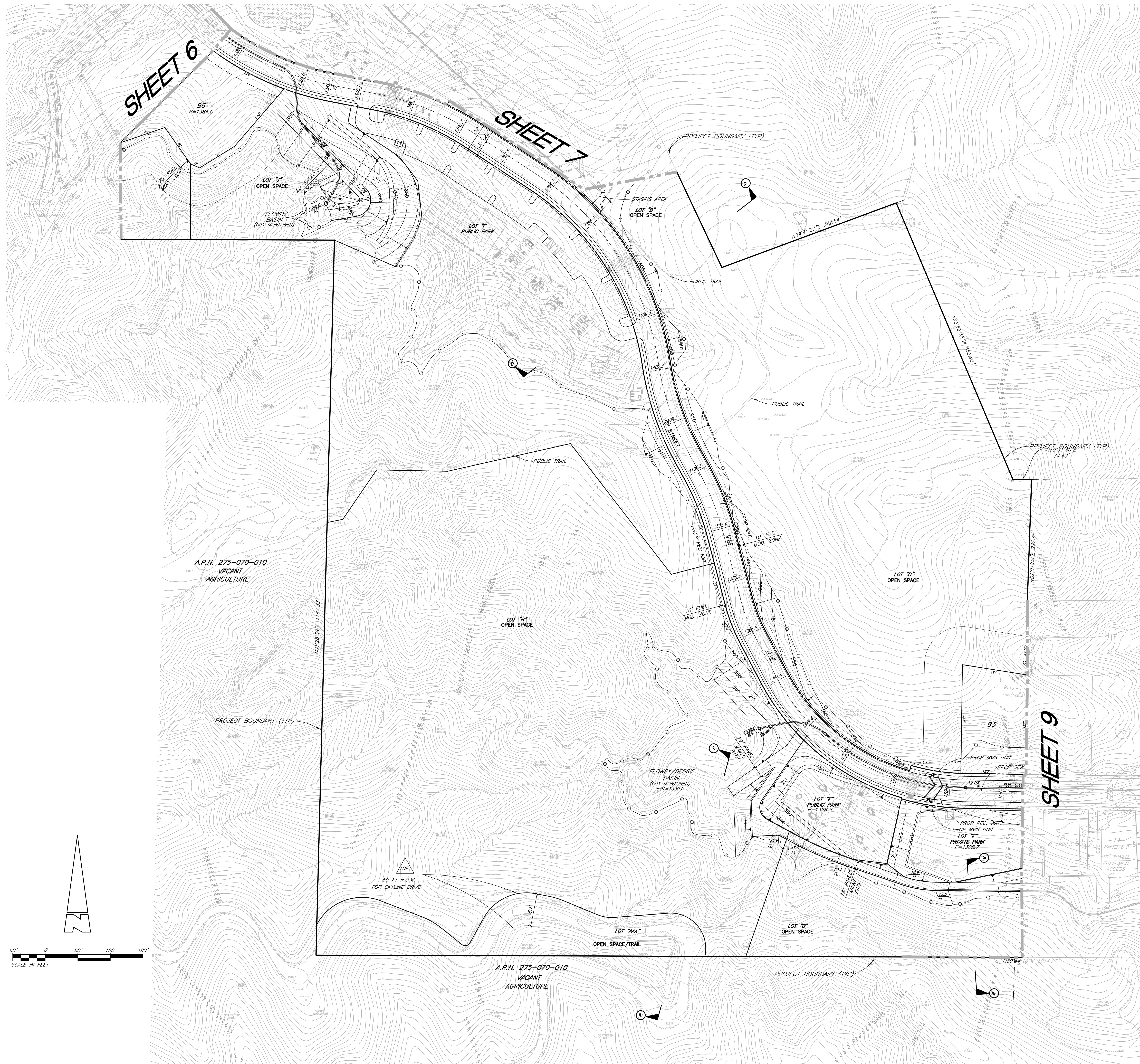


**REVISED TENTATIVE TRACT MAP
NO. 36544
SKYLINE HEIGHTS
CITY OF CORONA**

PREPARED FOR: **RICHLAND DEVELOPERS, INC.**
3161 MICHELSON DRIVE, SUITE 425
IRVINE, CA 92612
949-261-7010

PREPARED BY: **KWC ENGINEERS**
1800 COMPTON AVENUE, SUITE 100, CORONA, CA 92626-2392 951-734-2130

SHEET
7 OF 12
SHEETS

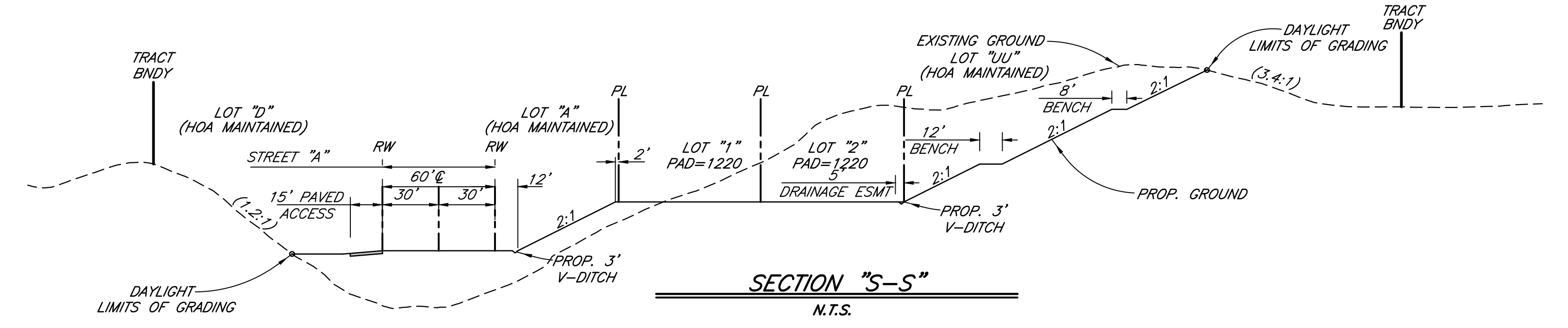


REVISED TENTATIVE TRACT MAP NO. 36544 SKYLINE HEIGHTS CITY OF CORONA

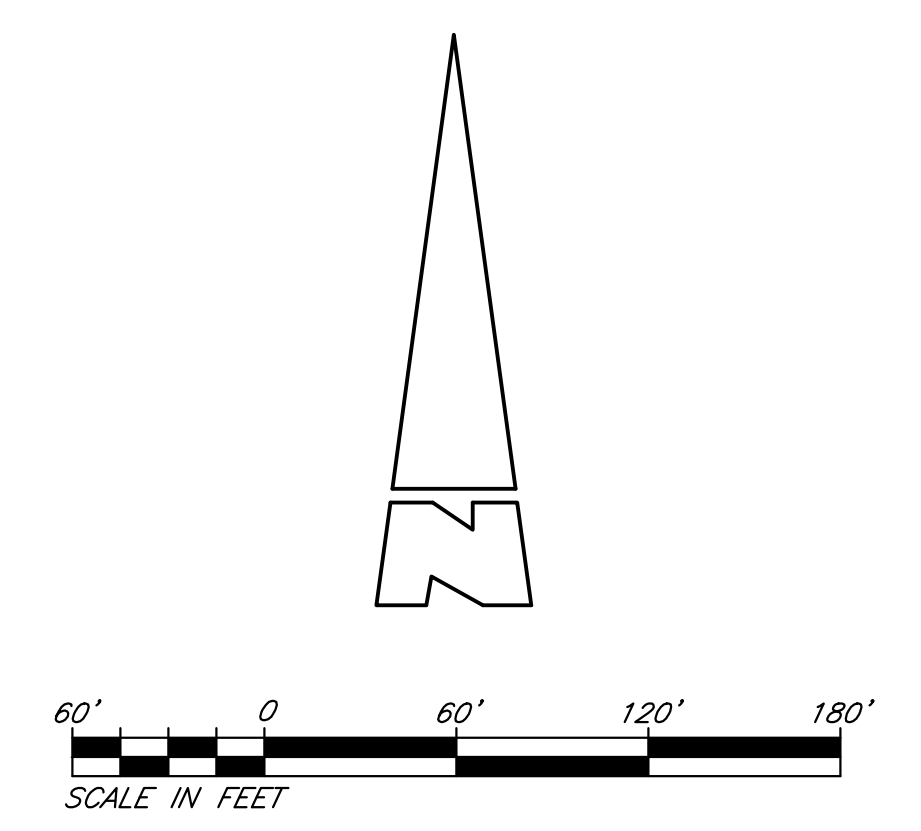
PREPARED FOR: **RICHLAND DEVELOPERS, INC.**
3161 MICHELSON DRIVE, SUITE 425
IRVINE, CA 92612
949-261-7010

PREPARED BY: **KWC ENGINEERS**
1800 COMPTON AVENUE, SUITE 100, CORONA, CA 92626-2192 951-734-2130

SHEET 8 OF 12 SHEETS



SHEET 8



REVISED TENTATIVE TRACT MAP NO. 36544 SKYLINE HEIGHTS CITY OF CORONA

PREPARED FOR: RICHLAND DEVELOPERS, INC. 3161 MICHELSON DRIVE, SUITE 425 IRVINE, CA 92612 949-261-7010

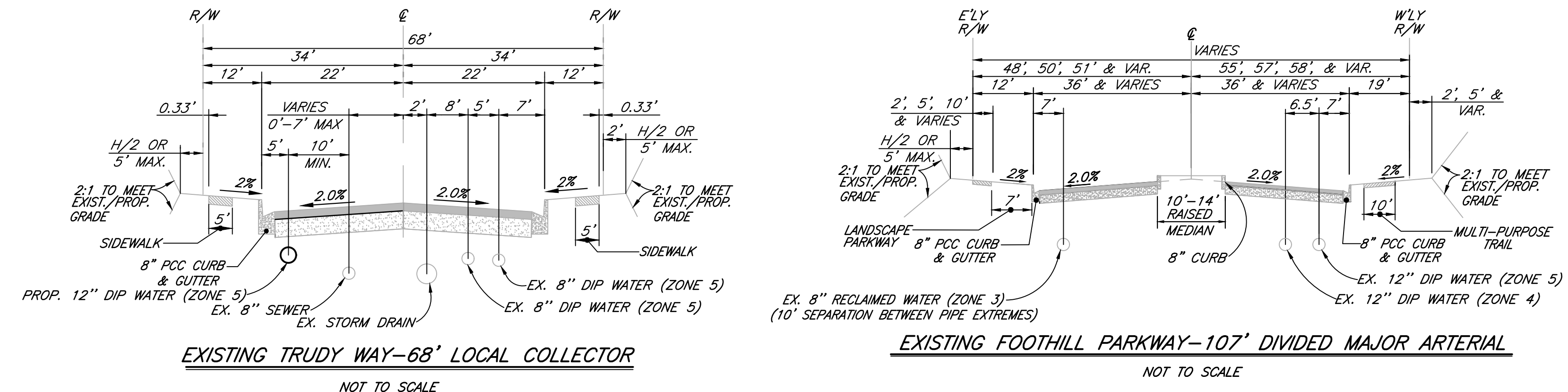
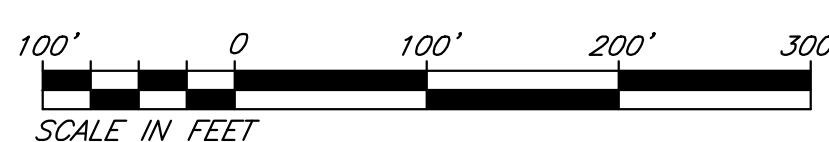
PREPARED BY: **KWC ENGINEERS**

CIVIL ENGINEERS • PLANNERS • SURVEYORS
1800 COMPTON AVENUE, SUITE 100, CORONA, CA 92626-2392 951-734-2130

SHEET 9 OF 12 SHEETS

PRESSURE ZONE SUMMARY	
ZONE	MAX. PROPOSED SERVICE ELEV.
ZONE 5 (1380 HWL)	1422
ZONE 6A (1560 HWL)	1416

- UTILITY LEGEND:**
- W (ZONE-6A)- PROPOSED WATER
 - S (ZONE-5A)- PROPOSED SEWER
 - RW (ZONE-3A)- PROPOSED RECLAIMED WATER
 - SD- PROPOSED STORM DRAIN
 - EX- EXISTING WATER
 - EX- EXISTING SEWER
 - EX- EXISTING RECLAIMED WATER
 - EX- EXISTING STORM DRAIN



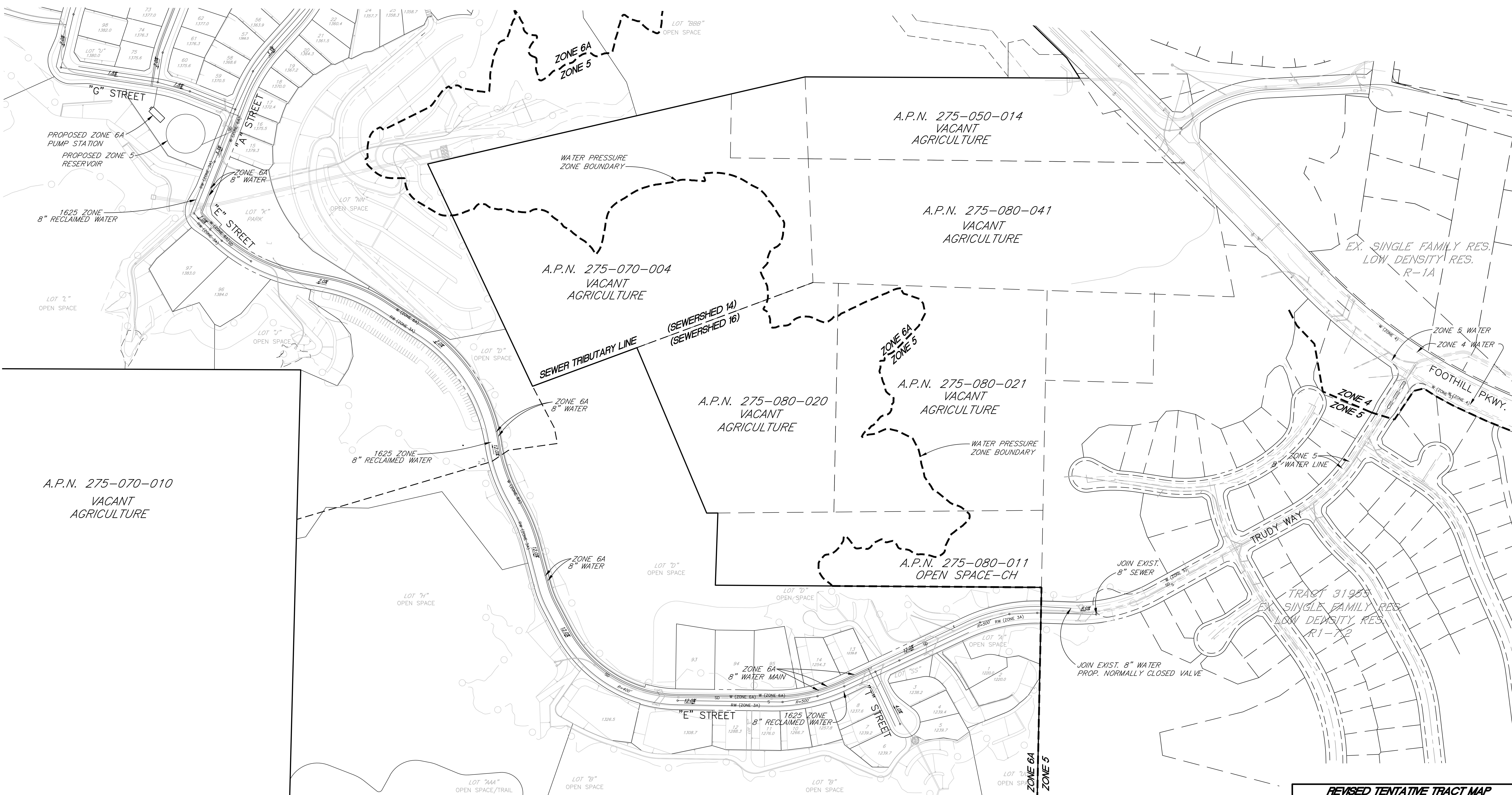
SEE CROSS SECTIONS ON SHEET 1 FOR PROPOSED ONSITE UTILITY LOCATIONS

GENERAL INFRASTRUCTURE IMPROVEMENT NOTES:

- DOMESTIC WATER SYSTEM:**
- 1) ALL DOMESTIC WATER DESIGN CRITERIA SHALL BE PER CITY OF CORONA DEPARTMENT OF WATER AND POWER STANDARDS AND RIVERSIDE COUNTY DEPARTMENT OF HEALTH SERVICES STANDARD UNLESS OTHERWISE APPROVED.
 - 2) MINIMUM STATIC PRESSURE SHALL BE 60 PSI AT PEAK HOUR.
 - 3) MINIMUM FIRE FLOW SHALL BE 1500 GPM.
 - 4) ONSITE FIRE HYDRANTS SHALL BE SPACED A MAXIMUM OF 300 FEET APART.
 - 5) ALL PROPOSED PUMP STATIONS AND WATER RESERVOIR SITES SHALL BE PUBLICLY MAINTAINED.
- RECLAIMED WATER SYSTEM:**
- 1) ALL RECLAIMED WATER DESIGN CRITERIA SHALL BE PER CITY OF CORONA DEPARTMENT OF WATER AND POWER STANDARDS AND RIVERSIDE COUNTY DEPARTMENT OF HEALTH SERVICES STANDARD UNLESS OTHERWISE APPROVED.
 - 2) ALL LANDSCAPED LOTS SHALL BE IRRIGATED WITH RECLAIMED WATER.
 - 3) ALL PROPOSED PUMP STATIONS SITES SHALL BE PRIVATELY MAINTAINED.
- SEWER SYSTEM:**
- 1) ALL SEWER DESIGN CRITERIA SHALL BE PER CITY OF CORONA DEPARTMENT OF WATER AND POWER STANDARDS AND RIVERSIDE COUNTY DEPARTMENT OF HEALTH SERVICES STANDARD UNLESS OTHERWISE APPROVED.
 - 2) PROJECT DOWNSTREAM SEWER IMPACTS SHALL BE DETERMINED AND MITIGATED AS DIRECTED OR AGREED UPON WITH THE CITY OF CORONA DEPARTMENT OF WATER AND POWER.

INFRASTRUCTURE IMPROVEMENT SUMMARY:

- WATER SYSTEM:**
- 1) THE SKYLINE HEIGHTS PROJECT WILL BE SERVICED BY TWO PRESSURE ZONES, THE EXISTING ZONE 5 (1380 HWL) AND THE INTERMEDIATE ZONE 6A (1540 HWL). IT IS PROPOSED TO CONSTRUCT A NEW 12-INCH LINE FROM THE PROPOSED ONSITE BOOSTER PUMP STATION AT THE ZONE 5 RESERVOIR SITE.
 - 2) THERE IS A 12-INCH ZONE 6A ONSITE LOOPED WATERLINE FROM THE BOOSTER STATION TO THE PROPOSED 0.6 MG ZONE 6A RESERVOIR AT 1540 HWL.
 - 3) PROPOSED ZONE 6A BOOSTER PUMP STATION SHALL BE DESIGNED FOR 500 GPM FIRM CAPACITY.
 - 4) A NETWORK OF ONSITE 8-INCH DISTRIBUTION PIPELINES ARE ALSO PROPOSED FOR THE TWO WATER PRESSURE ZONES TO SERVE THE PROPOSED RESIDENTIAL LOTS.
- RECLAIMED WATER SYSTEM:**
- 1) PROPOSED ONSITE 1380 ZONE AND 1650 ZONE RECLAIMED WATER SYSTEM CONSISTS OF A 8-INCH AND 12-INCH DISTRIBUTION PIPELINES. THESE LINES WILL BE PRIVATELY MAINTAINED.
 - 2) PROPOSED 1650 ZONE HYDRO-PNEUMATIC PUMP STATION WITH AN TOTAL FIRM CAPACITY OF 1450 GPM.
- SEWER SYSTEM:**
- 1) THE ONSITE SEWER SYSTEM CONSISTS OF 8-INCH GRAVITY SEWER LINES. THERE WILL ALSO BE ONSITE 8-INCH SEWER LINES CONSTRUCTED TO CONNECT TO THE EXISTING SEWER SYSTEM.
 - 2) SEVERAL DOWNSTREAM GRAVITY SEWER LINES TRIBUTARY TO SEWERSHED 14 HAVE BEEN IDENTIFIED AS DEFICIENT PER THE ONSITE SEWER ANALYSIS CONDUCTED BY THE CITY AND INCORPORATED INTO THE PRELIMINARY WASTEWATER REPORT FOR THE PROJECT. THESE SEGMENTS WILL REQUIRE UPGRADES/REPLACEMENT AS DETERMINED BY THE CITY OF CORONA.



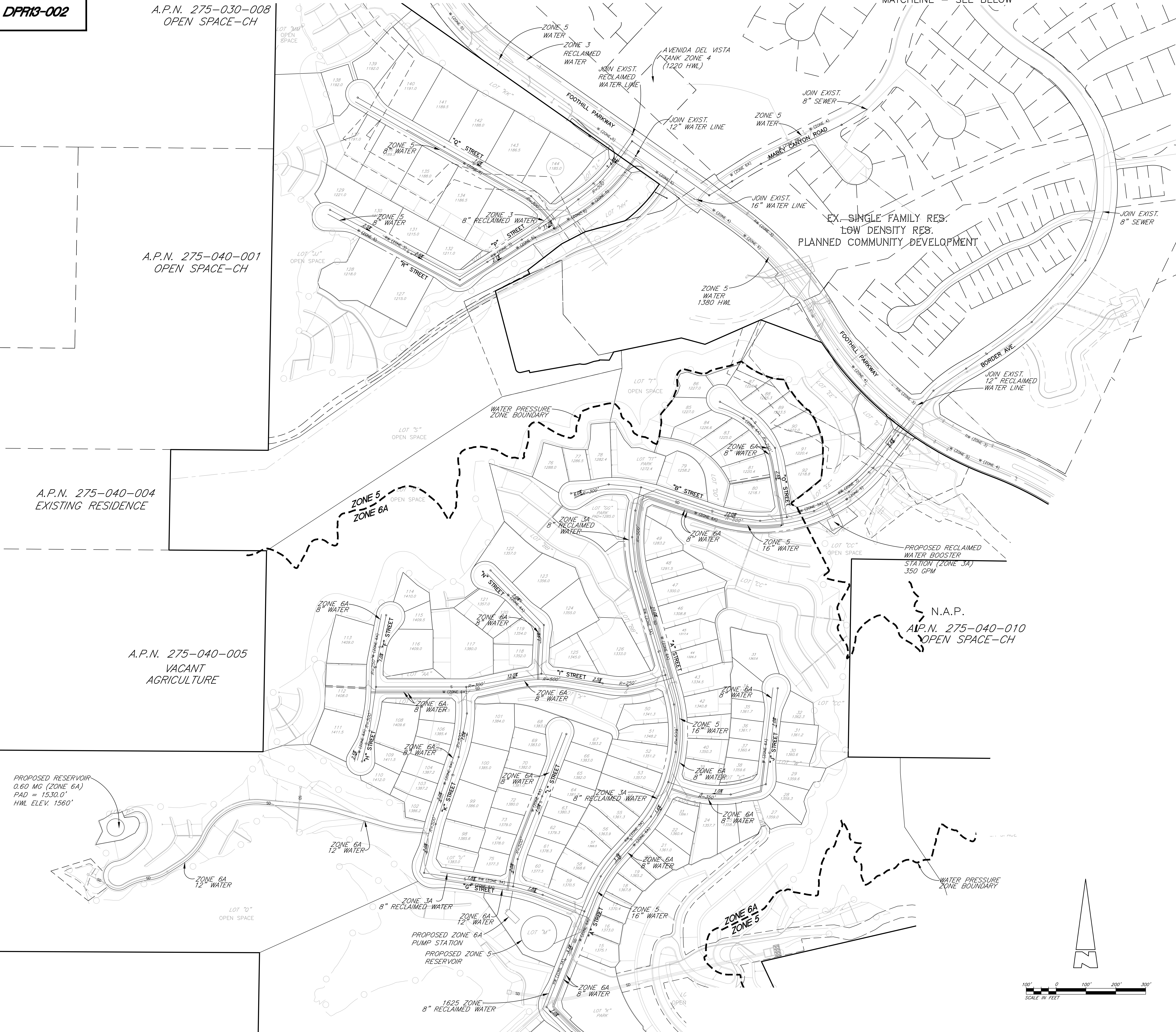
REVISED TENTATIVE TRACT MAP NO. 36544 SKYLINE HEIGHTS CITY OF CORONA

PREPARED FOR: RICHLAND DEVELOPERS, INC. 3161 MICHELSON DRIVE, SUITE 425 IRVINE, CA 92612 949-261-7010

PREPARED BY: **KWC ENGINEERS**

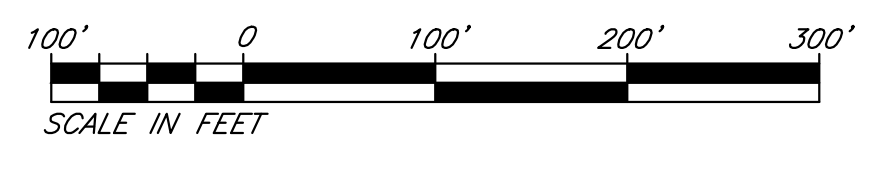
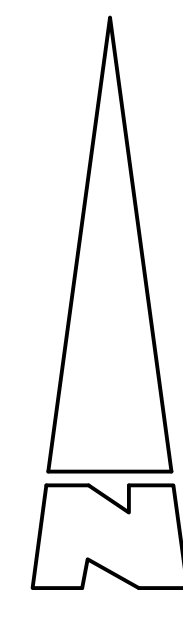
SHEET 11 OF 12 SHEETS

PROPOSED RESERVOIR
0.60 MG (ZONE 6A)
PAD = 1530.0'
HWL ELEV. 1560'



PROPOSED RECLAIMED
WATER BOOSTER
STATION (ZONE 3A)
350 GPM

N.A.P.
A.P.N. 275-040-010
OPEN SPACE-CH



**REVISED TENTATIVE TRACT MAP
NO. 36544
SKYLINE HEIGHTS
CITY OF CORONA**

PREPARED FOR: **RICHLAND DEVELOPERS, INC.**
3161 MICHELSON DRIVE, SUITE 425
IRVINE, CA 92612
949-261-7010

PREPARED BY: **KWC ENGINEERS**
1800 COMPTON AVENUE, SUITE 100, CORONA, CA 92626 951-734-2130

SHEET
12 OF 12
SHEETS